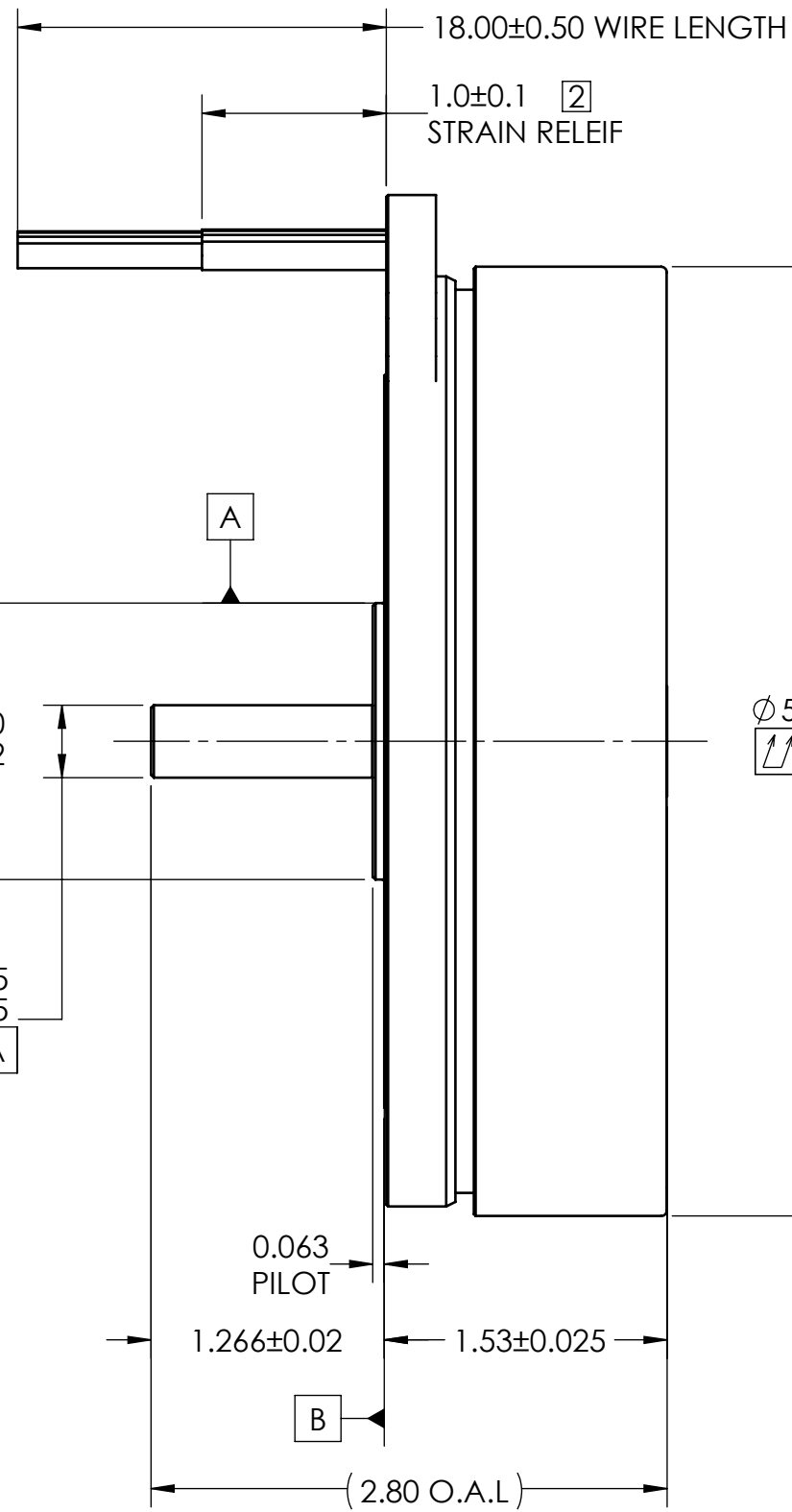


MOTOR MTG HOLES
4 x 8-32 UNC THRU
EQUALLY SPACED
RECM'D TORQUE: 5-6 in/lbs
⊕ ⌀ 0.015 A B

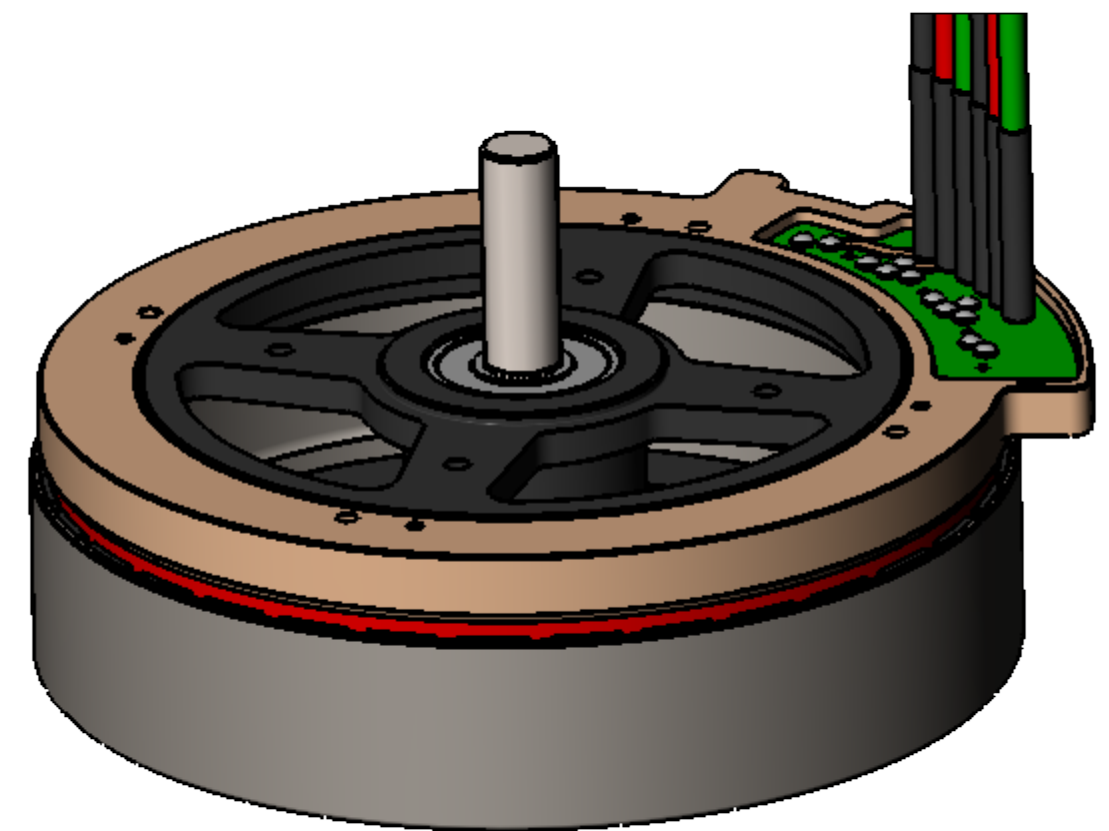
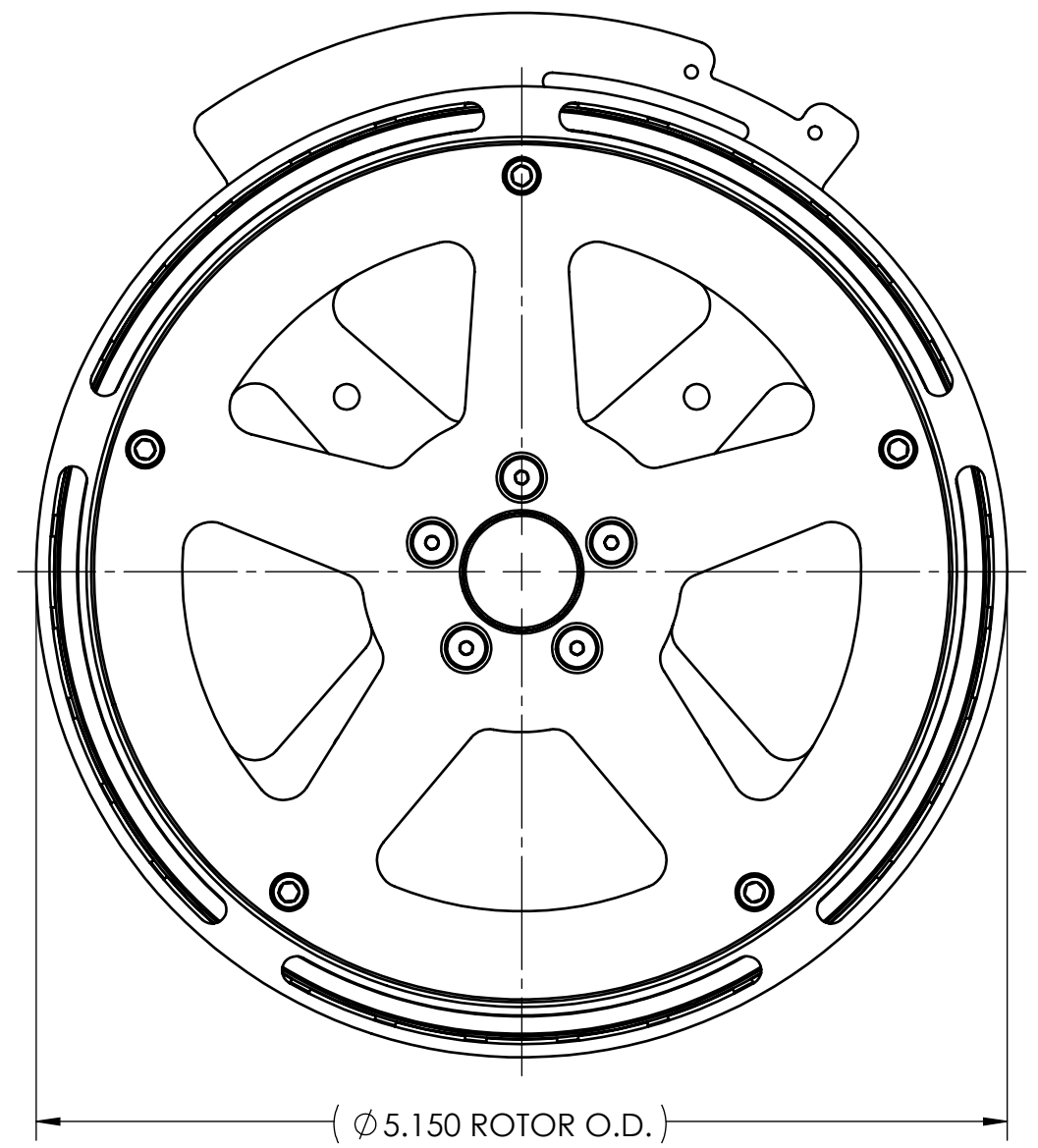
⌀ 2.625

⌀ 1.500 ^{+0.000}/_{-0.002}

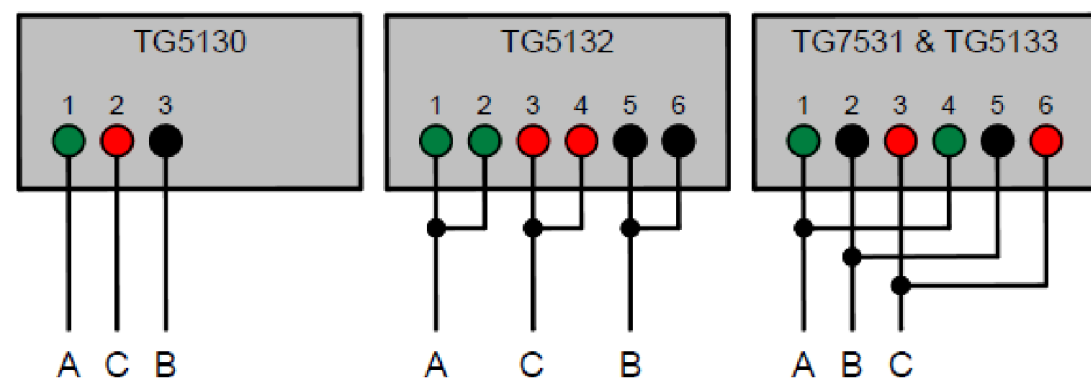
⌀ 0.3935
⌀ 0.3925
◎ 0.003 A



⌀ 5.150 ROTOR O.D.
∕∕ ⌀ 0.015 A B



POWER CONNECTIONS 1



NOTES:

- 1 POWER CONNECTIONS SHALL BE DONE IN ACCORDANCE TO THE DIAGRAMS SHOWN ON THIS PRINT.
- 2 PHASE LEAD WIRES EXIT STRAIGHT FROM THE PCB. FOR OPTIONAL RIGHT ANGLE EXIT, A MINIMUM CLEARANCE IS REQUIRED TO ACCOUNT FOR WIRE BEND RADIUS/STRAIN RELIEF.

TG5130 Phase Lead Identification			TG5132 Phase Lead Identification			TG5131 & TG5133 Phase Lead Identification			Product Identification TG513X Motor Series	
Lead #	Color	Description	Lead #	Color	Description	Lead #	Color	Description	Item #	Description
1	GREEN	PHASE A	1 & 2	GREEN	PHASE A	1 & 4	GREEN	PHASE A	TG5130	MOTOR ASSY, WYE SERIES
2	RED	PHASE C	3 & 4	RED	PHASE C	2 & 5	BLACK	PHASE B	TG5131	MOTOR ASSY, DELTA SERIES
3	BLACK	PHASE B	5 & 6	BLACK	PHASE B	3 & 6	RED	PHASE C	TG5132	MOTOR ASSY, WYE PARALLEL
									TG5133	MOTOR ASSY, DELTA PARALLEL

DRAWING PROJECTION



	NAME	DATE
DRAWN	CS	20 MAR 16
CHECKED	DH	20 MAR 16
APPROVAL	EF	25 MAR 16

UNLESS OTHERWISE SPECIFIED, ALL DIMENSIONS ARE IN INCHES

TOLERANCES:
LINEAR: .X ±0.020 ANGLES: ±0.1°
.XX ±0.010
.XXX ±0.005



MOTOR ASSEMBLY

ITEM# TG513X-M010

REV B

COPYRIGHT © 2015 BY THINGAP

APPROX WEIGHT 1.6 lbs